

Instrument Care Reminders

Before putting your instrument back in its case after playing, do the following:

Remove the reed, wipe off excess moisture and return it to the reed case.

Remove the mouthpiece and wipe the inside with a clean cloth. Once a week, wash the mouthpiece with warm tap water. Dry thoroughly.

Loosen the neck screw and remove the neck. Shake out excess moisture and dry the neck with a neck cleaner.

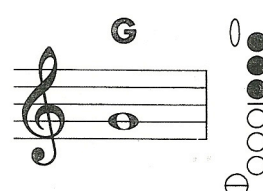
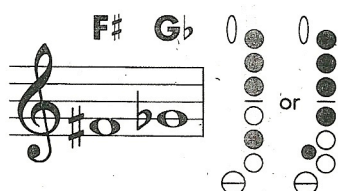
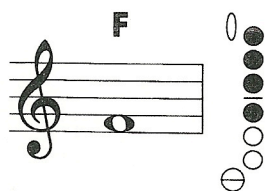
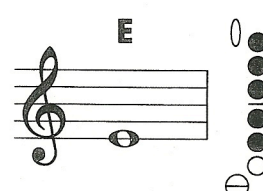
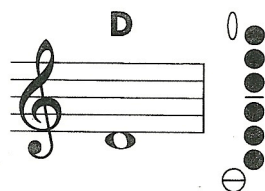
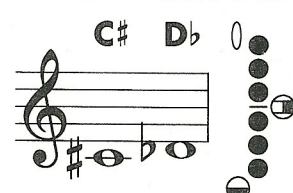
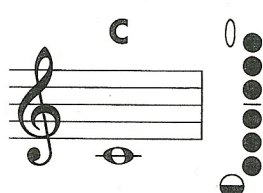
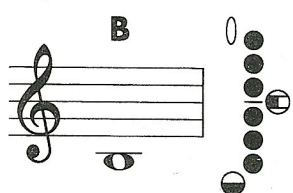
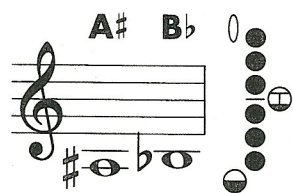
Drop the weight of a chamois or cotton swab into the bell. Pull the swab through the body several times. Return the instrument to its case.

Your case is designed to hold only specific objects. If you try to force anything else into the case, it may damage your instrument.



Instrument courtesy of Yamaha Corporation of America, Band and Orchestral Division

A scale
3 sharps: F#, C#, G#
ARP: A-C#-E



G# A \flat

A

A# B \flat

B

C

C# D \flat

D

D# E \flat

E

F

F# G \flat

G

G# A \flat

A

A# B \flat

B

C

C# D \flat

D

D# E \flat

E

F