

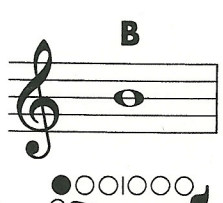
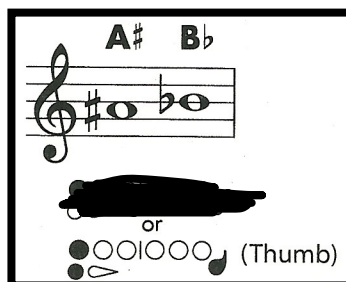
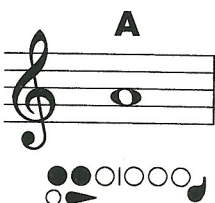
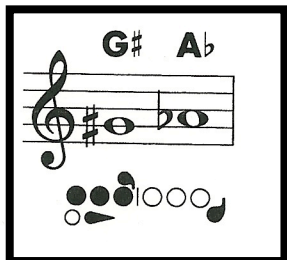
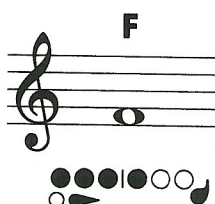
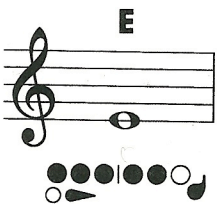
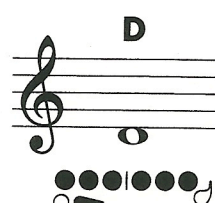
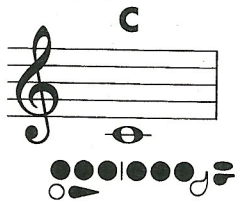
Instrument courtesy of  
Yamaha Corporation of America,  
and Orchestral Division

**Ab scale (thumb on Bb)**  
**4 flats: Bb, Eb, Ab, Db**  
**ARP: Ab-C-Eb**

## Instrument Care Reminders

Before putting your instrument back in its case after playing, do the following:

- Carefully remove the head joint and shake any water out.
- Put a clean soft cloth on the end of your cleaning rod and swab out the head joint.
- Twist the middle and foot joints apart and draw the cleaning rod through each joint.
- Carefully wipe the outside of each section to keep the finish clean.



**C**

**C# D $\flat$**

**D**

**D# E $\flat$**

**E**

**F**

**F# G $\flat$**

**G**

**G# A $\flat$**

**A**

**A# B $\flat$**

or  
 (Thumb)

**B**

**C**

**C# D $\flat$**

**D**

**D# E $\flat$**

**E**

**F**

**F# G $\flat$**

**G**

**G# A $\flat$**

**A**

**A# B $\flat$**

or  
 (Thumb)

**B**

**C**