

# FINGERING CHART

**BARITONE B.C.**

## Instrument Care Reminders

Before putting your instrument back in its case after playing, do the following:

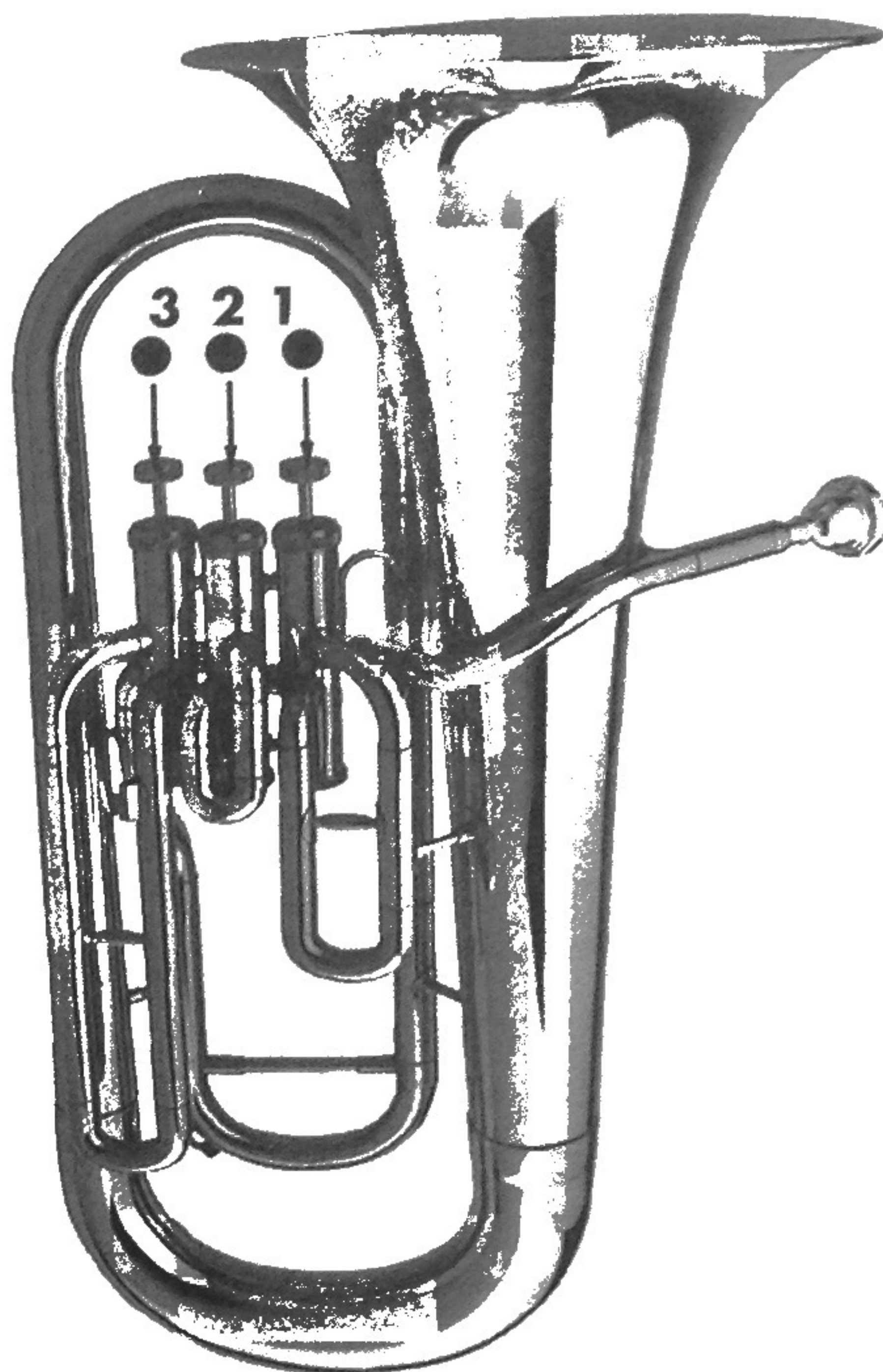
- Use the water key to empty water from the instrument. Blow air through it.
- Remove the mouthpiece. Once a week, wash the mouthpiece with warm tap water. Dry thoroughly.
- Wipe off the instrument with a clean soft cloth. Return the instrument to its case.

Baritone valves occasionally need oiling. To oil your baritone valves:

- Unscrew the valve at the top of the casing.
- Lift the valve half-way out of the casing.
- Apply a few drops of special brass valve oil to the exposed valve.
- Carefully return the valve to its casing. When properly inserted, the top of the valve should easily screw back into place.

Be sure to grease the slides regularly. Your director will recommend special slide grease and valve oil, and will help you apply them when necessary.

**CAUTION:** If a slide, a valve or your mouthpiece becomes stuck, ask for help from your band director or music dealer. Special tools should be used to prevent damage to your instrument.



- = Open  
● = Pressed down

C Major scale

No sharps/flats

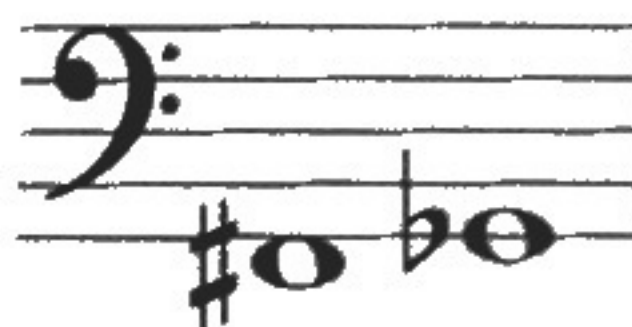
Instrument courtesy of  
Yamaha Corporation of America  
Band and Orchestral Division

**E**


● ● ●  
1 2 3

**F**

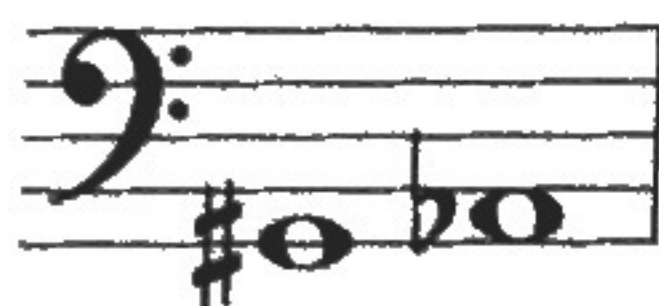

● ○ ●

**F# Gb**


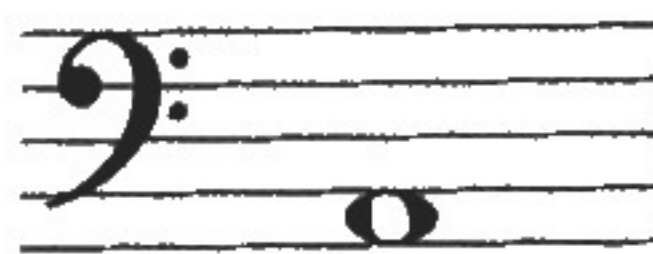
○ ● ●

**G**

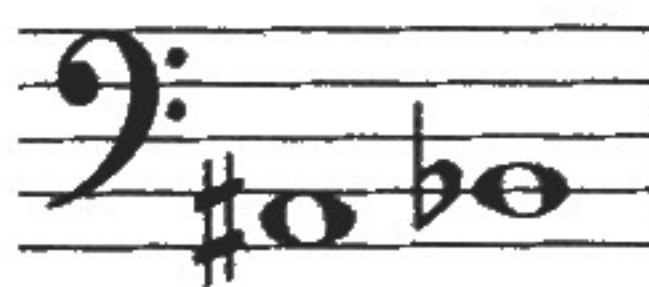

● ● ○

**G# Ab**


● ○ ○

**A**


○ ● ○

**A# Bb**


○ ○ ○

**B**


● ● ●



# FINGERING CHART

BARITONE B.C.

4

**C**

Diagram showing the fingering for the note C on a bass clef staff. The note is on the first line. Below the staff, the fingering is indicated by three dots: a solid black dot, followed by two open circles.

**C# D $\flat$**

Diagram showing the fingering for the notes C# and D $\flat$  on a bass clef staff. The notes are on the first and second lines. Below the staff, the fingering is indicated by three dots: an open circle, followed by two solid black dots.

**D**

Diagram showing the fingering for the note D on a bass clef staff. The note is on the second line. Below the staff, the fingering is indicated by three dots: two solid black dots, followed by an open circle.

**D# E $\flat$**

Diagram showing the fingering for the notes D# and E $\flat$  on a bass clef staff. The notes are on the second and third lines. Below the staff, the fingering is indicated by three dots: a solid black dot, followed by two open circles.

**E**

Diagram showing the fingering for the note E on a bass clef staff. The note is on the third line. Below the staff, the fingering is indicated by three dots: an open circle, followed by two solid black dots.

**F**

Diagram showing the fingering for the note F on a bass clef staff. The note is on the fourth line. Below the staff, the fingering is indicated by three open circles.

**F# G $\flat$**

Diagram showing the fingering for the notes F# and G $\flat$  on a bass clef staff. The notes are on the fourth and fifth lines. Below the staff, the fingering is indicated by three dots: an open circle, followed by two solid black dots.

**G**

Diagram showing the fingering for the note G on a bass clef staff. The note is on the fifth line. Below the staff, the fingering is indicated by three dots: two solid black dots, followed by an open circle.

**G# A $\flat$**

Diagram showing the fingering for the notes G# and A $\flat$  on a bass clef staff. The notes are on the fifth line and the first line of the next octave. Below the staff, the fingering is indicated by three dots: a solid black dot, followed by two open circles.

**A**

Diagram showing the fingering for the note A on a bass clef staff. The note is on the first line of the next octave. Below the staff, the fingering is indicated by three dots: an open circle, followed by two solid black dots.

**A# B $\flat$**

Diagram showing the fingering for the notes A# and B $\flat$  on a bass clef staff. The notes are on the first and second lines of the next octave. Below the staff, the fingering is indicated by three open circles.

**B**

Diagram showing the fingering for the note B on a bass clef staff. The note is on the second line of the next octave. Below the staff, the fingering is indicated by three dots: two solid black dots, followed by an open circle.

**C**

Diagram showing the fingering for the note C on a bass clef staff. The note is on the first line of the next octave. Below the staff, the fingering is indicated by three dots: a solid black dot, followed by two open circles.

**C# D $\flat$**

Diagram showing the fingering for the notes C# and D $\flat$  on a bass clef staff. The notes are on the first and second lines of the next octave. Below the staff, the fingering is indicated by three dots: an open circle, followed by two solid black dots.

**D**

Diagram showing the fingering for the note D on a bass clef staff. The note is on the second line of the next octave. Below the staff, the fingering is indicated by three open circles.

**D# E $\flat$**

Diagram showing the fingering for the notes D# and E $\flat$  on a bass clef staff. The notes are on the second and third lines of the next octave. Below the staff, the fingering is indicated by three dots: a solid black dot, followed by two open circles.

**E**

Diagram showing the fingering for the note E on a bass clef staff. The note is on the third line of the next octave. Below the staff, the fingering is indicated by three dots: an open circle, followed by two solid black dots.

**F**

Diagram showing the fingering for the note F on a bass clef staff. The note is on the fourth line of the next octave. Below the staff, the fingering is indicated by three open circles.

**F# G $\flat$**

Diagram showing the fingering for the notes F# and G $\flat$  on a bass clef staff. The notes are on the fourth and fifth lines of the next octave. Below the staff, the fingering is indicated by three dots: an open circle, followed by two solid black dots.